

# ROCK SOLID RESISTANCE



**GOODYEAR  
OFFROAD**

**UNSTOPPABLE  
PERFORMANCE**

**GOODYEAR**

# OFFROAD

**A TIRE DESIGNED TO CONQUER THE TOUGHEST OF SURFACE CONDITIONS WITH EXCELLENT OFF-ROAD TRACTION, STONE HOLDING RESISTANCE AND BALANCED WEAR.**



Made for both heavy off-road applications and military uses, the Goodyear OFFROAD tire is the peak of durability and resistance. It combines high traction capabilities with excellent retreadability and extraordinary resistance, even in the most severe conditions. Thanks to its origins as a surface mining tire, the OFFROAD is extremely reliable and robust.

## **Optimized durability**

Tires that keep going, no matter what

## **Extensive retreadability**

Means you get the maximum out of each and every tire

## **Exceptional off-road traction**

Performs wherever you need it to

## **Resistance to tearing and cutting**

High mileage-potential

## **Self-cleaning**

Increases traction and avoids stone holding



## **RADIO FREQUENCY IDENTIFICATION (RFID)**

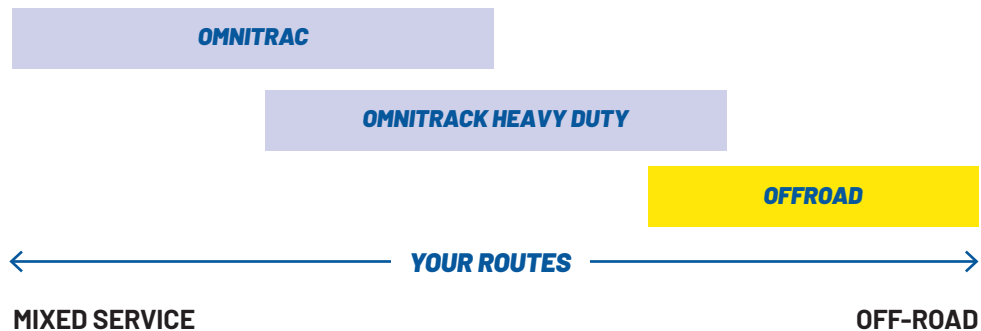
**RFID tags are integrated in selected Goodyear OFFROAD tires.**

An RFID tag is embedded inside the tire and allows simple identification and connectivity to tire management and tracking systems. The RFID contains ISO standard information as per SGTIN96 coding. Tires can communicate with a cloud network on an individual serial number level, optimising tire flow management.



# WHICH TIRES ARE RIGHT FOR YOU?

For those fleets that have to tackle the hardships of off-road applications, Goodyear designed the OFFROAD range. Be it military and emergency vehicles that have to get where they're going fast and reliably or commercial mining vehicles that need to endure high loads and long working hours, the OFFROAD range of tires is perfect for the most demanding off-road applications.



## OFFROAD IS THE IDEAL CHOICE FOR FLEETS THAT:



**WORK LONG HOURS  
IN CHALLENGING  
CONDITIONS**



**NEED  
EXCEPTIONAL  
DURABILITY**



**OPERATE  
MAINLY  
OFF-ROAD**



# OFFROAD

## GET THE JOB DONE

DRIVE /  
ALLROUND



## OFFROAD / OFFROAD HEAVY DUTY

**TOUGH, RELIABLE AND MADE TO TACKLE THE MOST SEVERE CONDITIONS, THE OFFROAD RANGE FEATURES TWO TIRES THAT PERFORM WHERE YOU NEED THEM TO. THE OFFROAD AND OFFROAD HEAVY DUTY WILL MAKE EVEN THE TOUGHEST APPLICATIONS YOUR FLEET FACES A BREEZE.**

### OFFROAD

Perfect for withstanding the high speeds of **military** and **emergency applications**. With low heat-generation, this tire can get you where you're going fast, without compromising on reliability.

### OFFROAD HEAVY DUTY

Designed for the demands of **heavy off-road mining** applications that require **constant full loads** and heavy use for **long hours**. Long-lasting tread that resists chipping and chucking, excellent off-road traction.

#### 1. REINFORCED BEAD AREA

**Less flexing and lower heat generation** under high stress. Meets requirements for higher certification inflation pressure, higher tonnage trucks and increased workload.

#### 2. DAMAGE-RESISTANT COMPOUND

Compound is highly resistant to cuts and cracks caused by external influences or severe terrains, with high tolerance against overload and constant stress. The tread compound of the OFFROAD version is designed to **minimise heat generation** in high speed applications.



M+S

**DRIVE /  
ALLROUND**



## OFFROAD ORD

**A DESIGN SPECIFICALLY MADE FOR MINING AND TOUGH CONSTRUCTION SITE VEHICLES, OPERATING IN SEVERE SERVICE CONDITIONS WHERE EXCELLENT TRACTION, MOBILITY, ROBUSTNESS AND DAMAGE RESISTANCE ARE THE MAIN REQUIREMENTS.**

**THE ALL-POSITION DESIGN PATTERN, FEATURING A DEDICATED ON/OFF ROAD TREAD COMPOUND, COMBINED WITH A ROBUST CARCASS CONSTRUCTION RESULTS IN EXCELLENT TRACTION, MILEAGE AND DAMAGE RESISTANCE PERFORMANCES.**



### **1. DEEP TREAD**

Good **off-road mud traction** and high mileage

### **2. OFF-ROAD TREAD COMPOUND**

Highly resistant to cutting and tearing

### **3. DEEP, WIDE SHOULDER GROOVES**

Self-cleaning tire that avoids stone-holding, resulting in **increased traction and longer tire life**

### **4. MASSIVE BLOCKS**

Improved **torque transmission** and **highly tear resistant**

### **5. ROBUST BEAD CONSTRUCTION**

Extremely durable bead that results in high **retreadability**

### **6. ULTRA TENSILE BELT PACKAGE**

Protects the tire against impacts and penetration through **increased strength in the crown area**

M+S





**DRIVE / ALLROUND**



# OFFROAD ORD

**SPECIFICALLY DESIGNED FOR MULTI-PURPOSE VEHICLES OPERATING IN SEVERE SERVICE CONDITIONS, EXCELLENT TRACTION, MOBILITY, ROBUSTNESS AND DAMAGE RESISTANCE ARE FRONT AND CENTRE IN THESE SIZES. WELL SUITED FOR SPECIAL OPERATIONS VEHICLES, FIRE BRIGADE TRUCKS AND MILITARY APPLICATIONS.**

**THE TIRES FEATURE AN ALL-POSITION PATTERN DESIGN AND A DEDICATED ON/OFF ROAD TREAD COMPOUND. COMBINED WITH A ROBUST CARCASS CONSTRUCTION THEY GIVE EXCELLENT TRACTION, MILEAGE AND HIGH DAMAGE RESISTANCE.**

## 1. DEEP TREAD & WIDE SHOULDER GROOVES

Good **off-road and mud traction** and high mileage. Self-cleaning tire that avoids stone-holding, resulting in **increased traction and longer tire life**

## 2. OVERLAPPING BLOCKS

Results in **balanced overall tire wear** and reduced noise

## 3. OFF-ROAD TREAD COMPOUND

**Highly resistant** to cutting and tearing

## 4. TIE-BARS BETWEEN BLOCKS

Improved lateral stability

## 5. ROBUST BEAD CONSTRUCTION

Extremely durable construction that results in high **retreadability**

## 6. ULTRA TENSILE BELT PACKAGE

Protects the tire against impacts and penetration through **increased strength in the crown area**



RFID: 375/90R22.5 only  

# GOODYEAR OFFROAD

## TECHNICAL DATA

### REGROOVING RECOMMENDATIONS

Goodyear OFFROAD truck tires are both retreadable and regroovable and have been developed for optimised sustainability, allowing fleets to make the best use of their tire assets and substantially reduce their cost per mile and environmental footprint.

#### OFFROAD / OFFROAD HEAVY DUTY

14.00R20



New tire tread



80% worn



Regrooved tire



Max. regrooving depth 3mm, regrooving width 8-10mm.

#### OFFROAD ORD

22.5 & 24"



New tire tread



80% worn



Regrooved tire



Max. regrooving depth 3mm, regrooving width 8-10mm.

#### OFFROAD / OFFROAD ORD

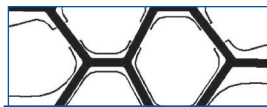
365/85R20 & 375/90R22.5



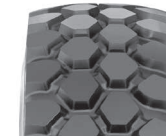
New tire tread



80% worn



Regrooved tire



Max. regrooving depth 3mm, regrooving width 8-10mm.

| TIRE DESIGN NAME   | SIZE          | LOAD / SPEED INDEX 1 | LOAD / SPEED INDEX 2 | POR | M+S | RFID |
|--------------------|---------------|----------------------|----------------------|-----|-----|------|
| OFFROAD HEAVY DUTY | 14.00 R 20    | 164/161 J            | 166/161 G            | ✓   | ✓   | ✓    |
| OFFROAD            | 14.00 R 20    | 164/160 K            | 166/160 G            | ✓   | ✓   | ✓    |
| OFFROAD ORD        | 365/85 R 20   | 164 J                |                      | ✓   | ✓   |      |
| OFFROAD ORD        | 13 R 22.5     | 156/150 G            | 154/150 J            | ✓   | ✓   |      |
| OFFROAD            | 375/90 R 22.5 | 164 G                |                      | ✓   | ✓   | ✓    |
| OFFROAD ORD        | 325/95 R 24   | 162/160 G            |                      | ✓   | ✓   |      |

POR: professional off-road rated tire, EU tire labeling directive not applicable



Goodyear Middle East & Africa



[www.goodyear-mea.com/en\\_ae/truck](http://www.goodyear-mea.com/en_ae/truck)

Subject to modifications and errors.  
Products and data are shown for illustrative  
purposes only. Graphic accuracy and logo  
placement may differ from the genuine product.

(0223/ENG)

