

MILEAGE CHAMPION



KMAX ENDURANCE

OPTIMAL MILEAGE
AND RELIABILITY FOR
DIFFERENT ON-ROAD
CONDITIONS

GOODYEAR

KMAX ENDURANCE

OPTIMAL MILEAGE AND RELIABILITY FOR DIFFERENT ON-ROAD CONDITIONS

KMAX S ENDURANCE+

IMPROVED MILEAGE & LOWER COST
PER KILOMETER

The New KMAX S ENDURANCE+ is an innovative steer tire that combines chipping/chunking resistance and robustness, with high mileage capability and even wear required for regional hauling applications.

1. NEW TREAD COMPOUND TO OPTIMIZE RESISTANCE TO ROAD ABRASION

The specific compound mix uses ingredients and a molecular structure designed to minimize wear and maximize resistance. This gives **maximized mileage** and **Chipping and chunking resistance**.

2. NEW OPTIMIZED FOOTPRINT

The footprint of the new "+" line was specifically optimized in order to guarantee high mileage matching steer axle market loading conditions. This results in **high mileage and very good tracking/steering on front axle** and **even wear**.

3. 5 RIB DESIGN WITH INNOVATIVE DETAILS

The wide tread gives better control and even wear allowing for more mileage. Less blading on the ribs give more robustness and resist chipping. Outer ribs with edge blading & inner ribs with Flexomatic blading give the right amount of traction & grip for the footprint.

This gives **high mileage/even wear, smooth ribs resist against chipping, chunking & tearing, casing integrity kept for retreading and optimal handling throughout tire life.**

STEER



315/80R22.5

385/65R22.5



M+S

DRIVE



KMAX D ENDURANCE

IMPROVED MILEAGE & LOWER COST PER KILOMETER

The New KMAX D ENDURANCE is a robust deep block tread pattern designed for the drive axle to maximize mileage and traction with a carcass structure to withstand the toughest jobs.



1. NEW TREAD COMPOUND TO OPTIMIZE RESISTANCE TO ROAD ABRASION

The specific compound mix uses ingredients and a molecular structure designed to minimize wear and maximize resistance. This helps in **maximized mileage** and **chipping and chunking resistance**.

2. DURABLE CARCASS CONSTRUCTION

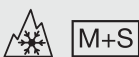
A strong and optimized carcass construction with strong crown construction providing evenly distributed stress in the tire footprint. This gives **excellent durability** and **reduced weight and retreadability**.

3. V SHAPE DIRECTIONAL DESIGN & VARIABLE PITCH LENGTH

As the tread blocks are arranged along a V-shape, they gradually enter the footprint. Different tread block lengths eliminate noise peaks. This gives **regular wear during the whole tire life** and **high traction and low noise emissions over the whole tread life**.

4. HUMPS IN THE CENTRAL RIBS

As tread blocks are interconnected in their lower part, their slip in the footprint is limited, consequently generating limited rubbing on the asphalt. This gives **high mileage** and **high robustness**.



TRAILER



KMAX T ENDURANCE

**IMPROVED MILEAGE & LOWER
COST PER KILOMETER**



The New KMAX T ENDURANCE offers optimal mileage performance thanks to its multi radius cavity shape and its high wearable rubber volume associated to an innovative tread compound, which reduce tread scuffing and tread chunking.

1. NEW TREAD COMPOUND TO OPTIMIZE RESISTANCE TO ROAD ABRASION

The specific compound mix uses ingredients and a molecular structure designed to minimize wear and maximize resistance. This gives **maximized mileage** and **chipping and chunking resistance**.

2. REINFORCED CARCASS

Carcass engineered for axle loads up to 10 tons (Load Index of 164 in size 385/65R22.5). This gives **high load capability (10 tons axles)**, **high robustness and durability** and **better retreadability**.

3. STRONG SHOULDER RIBS

The strong shoulder ribs will resist against shoulder wear as the load puts more pressure on them during cornering this robustness during maneuvers will ensure even wear and prevents cuts due to obstacles on the road side.. This gives **high mileage** and **robustness & durability**.

4. ZIG-ZAG GROOVES

The zig zag grooves allow for better traction during braking and will minimize stone holding due to the angles of the grooves.. This results in **durability due to less stone holding** and **high traction**.



M+S

KMAX ENDURANCE

TECHNICAL DATA

REGROOVING RECOMMENDATIONS

All tires are retreadable and regroovable and have been developed for optimised sustainability, allowing fleets to make the best use of their tire assets and substantially reduce their cost per mile and environmental footprint.

KMAX S ENDURANCE+



New tire tread



80% worn

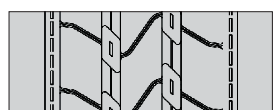


Regrooved tire

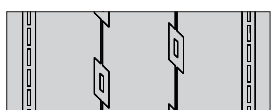


Maximum regrooving depth 3mm, regrooving width 6-8mm.

KMAX S ENDURANCE



New tire tread



80% worn



Regrooved tire



Maximum regrooving depth 3mm, regrooving width 6-8mm.

KMAX D ENDURANCE



New tire tread



80% worn

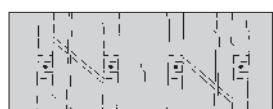


Regrooved tire



Maximum regrooving depth 3mm, regrooving width 6-8mm.

KMAX T ENDURANCE



New tire tread



80% worn



Regrooved tire (0 = Regrooving depth indicators)



Maximum regrooving depth 3mm, regrooving width 6-8mm.

TIRE DESIGN NAME	SIZE	LOAD / SPEED INDEX 1	LOAD / SPEED INDEX 2	FUEL EFFICIENCY	WET GRIP	NOISE EMISSIONS (CLASS / dB)	SNOW GRIP 3PMSF	M+S	RFID
KMAX S ENDURANCE +	315/80R22.5	156/150 L	154/150 M	C	B	B 71		✓	
KMAX S ENDURANCE	385/65R22.5	160 K	158 L	C	B	B 71		✓	
KMAX D ENDURANCE	315/80R22.5	156/150 L	154/150 M	D	B	B 75	✓	✓	
KMAX T ENDURANCE	385/65R22.5	164 K	158 L	C	B	B 71		✓	



Goodyear Middle East & Africa



www.goodyear-mea.com/en_ae/truck

Subject to modifications and errors.
Products and data are shown for illustrative
purposes only. Graphic accuracy and logo
placement may differ from the genuine product.

(0223/ENG)

GOODYEAR