

# DURABILITY WARRIOR



## **KMAX CARGO**

MILAGE AND DURABILITY  
FOR TOUGH ON-ROADS  
SERVICES

**GOODYEAR**

# KMAX CARGO

## MILAGE AND DURABILITY FOR TOUGH ON-ROADS SERVICES

### KMAX S CARGO

IMPROVED MILEAGE & LOWER COST PER KILOMETER

The New KMAX S CARGO is a 4 rib innovative steer tire that can be fitted on any axle, combining mileage and cut resistance for regional hauling applications. The new tire is designed with a reinforced bead area to withstand tough working conditions and services.

#### 1. NEW TREAD COMPOUND TO OPTIMIZE RESISTANCE TO ROAD ABRASION & INTELLIMAX RIB TECHNOLOGY ON CENTER RIBS

The specific compound mix uses ingredients and a molecular structure designed to minimize wear and maximize resistance. This benefits maximized mileage and chipping and chunking resistance. While Intellimax technology bridges the 2 center ribs in the central groove. As the tread design becomes stiffer, there is **limited slip when cornering**.

#### 2. REINFORCED BEAD AREA

The bead area features a specially reinforced construction. This gives **resistance to operations in heavy and tough cargo conditions**.

#### 3. DURABLE CARCASS CONSTRUCTION

A strong and optimized carcass construction with strong crown construction providing evenly distributed stress in the tire footprint. This ensures **excellent durability, reduced weight and retreadability**.

#### 4. STONE EJECTORS

The shape of the grooves together with the protectors at the bottom prevent stones from getting stuck. This benefits to **prevent stone damage and maximize carcass durability** and therefore its value via retreading.

STEER



M+S

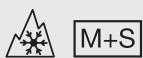
**DRIVE**



## **KMAX D CARGO**

**IMPROVED MILEAGE & LOWER COST PER KILOMETER**

The New KMAX D CARGO is a robust deep block tread pattern designed for the drive axle to maximize mileage and traction with a carcass structure to withstand the toughest jobs.



### **1. NEW TREAD COMPOUND TO OPTIMIZE RESISTANCE TO ROAD ABRASION**

The specific compound mix uses ingredients and a molecular structure designed to minimize wear and maximize resistance. This results **maximized mileage** and **chipping and chunking resistance**.

### **2. REINFORCED BEAD AREA & DURABLE CARCASS CONSTRUCTION**

The bead area features a specially reinforced construction. This gives resistance to operations in heavy and tough cargo conditions. In combination with a strong crown construction providing evenly distributed stress in the tire footprint. To ensure **excellent durability, reduced weight** and **retreadability**.

### **3. V SHAPE DIRECTIONAL DESIGN & VARIABLE PITCH LENGTH**

As the tread blocks are arranged along a V-shape, they gradually enter the footprint. Different tread block lengths eliminate noise peaks. This means **regular wear during the whole tire life** and **high traction and low noise emissions over the whole tread life**.

### **4. HUMPS IN CENTER RIBS AND SHOULDERS**

As tread blocks are interconnected in their lower part, their slip in the footprint is limited, consequently generating limited rubbing on the asphalt. To increase traction the shoulder ribs have been **specially carved to provide traction throughout tread life**.



**TRAILER**



## **KMAX T CARGO**

**IMPROVED MILEAGE & LOWER  
COST PER KILOMETER**



The New KMAX T CARGO offers superb mileage performance thanks to its multi radius cavity shape and its high wearable rubber volume associated to an innovative tread compound, which resists groove cracking and tread chunking.

### **1. NEW TREAD COMPOUND TO OPTIMIZE RESISTANCE TO ROAD ABRASION**

The specific compound mix uses ingredients and a molecular structure designed to minimize wear and maximize resistance. This gives **maximized mileage** and **chipping and chunking resistance**.

### **2. REINFORCED BEAD AREA**

The bead area features a specially reinforced construction. This benefits **esistance to operations in heavy and tough cargo conditions**.

### **3. DURABLE CARCASS CONSTRUCTION**

Carcass engineered for axle loads up to 10 tons (Load Index of 164 in size 385/65R22.5). This gives **high load capability (10 tons axles), high robustness and durability** and **better retreadability**.

### **4. ZIG-ZAG GROOVES & STRONG WIDE SHOULDERS**

The zig zag grooves allow for better traction during braking and will minimize stone holding due to the angles of the grooves. This offers durability due to less stone holding and high traction. While the shoulders resist against shoulder wear as the load puts more pressure on them during cornering this robustness during maneuvers will **ensure even wear** and **prevents cuts due to obstacles on the road side**.



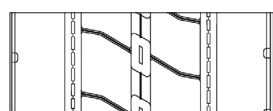
# KMAX CARGO

## TECHNICAL DATA

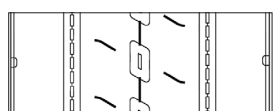
### REGROOVING RECOMMENDATIONS

All tires are retreadable and regroovable and have been developed for optimised sustainability, allowing fleets to make the best use of their tire assets and substantially reduce their cost per mile and environmental footprint.

#### KMAX S CARGO



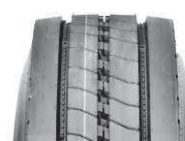
New tire tread



80% worn



Regrooved tire



Maximum regrooving depth 3mm, regrooving width 6-8mm.

#### KMAX D CARGO



New tire tread



80% worn

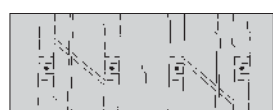


Regrooved tire



Maximum regrooving depth 3mm, regrooving width 6-8mm.

#### KMAX T CARGO



New tire tread



80% worn



Regrooved tire (0 = Regrooving depth indicators)



Maximum regrooving depth 3mm, regrooving width 6-8mm.

TIRE DESIGN NAME	SIZE	LOAD / SPEED INDEX 1	LOAD / SPEED INDEX 2	FUEL EFFICIENCY	WET GRIP	NOISE EMISSIONS (CLASS / dB)	SNOW GRIP 3PMSF	M+S	RFID
KMAX S CARGO	315/80R22.5	156/150 L	154/150 M	B	B	A 70		✓	
KMAX D CARGO	315/80R22.5	156/150 L	154/150 M	D	C	B 74	✓	✓	
KMAX D CARGO	295/80R22.5	152/148 M	-	D	C	B 75	✓	✓	
KMAX T CARGO	385/65R22.5	164 K	158 L	B	B	A 70		✓	



Goodyear Middle East & Africa



[www.goodyear-mea.com/en\\_ae/truck](http://www.goodyear-mea.com/en_ae/truck)

Subject to modifications and errors.  
Products and data are shown for illustrative  
purposes only. Graphic accuracy and logo  
placement may differ from the genuine product.

(0223/ENG)

**GOODYEAR**