

# BRING ON TOMORROW



**KMAX  
KMAX GEN-2  
17.5/19.5"**

**ALL-ROUND  
PERFORMER**

**GOODYEAR**



# SOLID PERFORMANCE ON ANY ROAD

Tough enough for the city streets and durable for long-distance hauling. The KMAX and KMAX GEN-2 ranges are designed for light vehicles to conquer any road, whatever the season. These tyres guide you along city roads and curbsides. With high mileage and great robustness. And ultimate peace of mind.



## THE KMAX AND KMAX GEN-2 OFFER YOU

### Performance in all applications

Count on an **a reliable tyre** for any situation on any route.

### All-weather capabilities

Conquer all weather conditions, and comply with the most stringent winter regulations.

**All KMAX and KMAX GEN-2 tyres are 3PMSF marked.**

### Extended mileage

Get **great mileage** out of your **tyre budget**.

### High levels of traction

Rely on a **firm grip** throughout the whole tyre life cycle.

Thanks to the KMAX technology, you're all set to travel the everyday demanding roads. The robust carcass structure and extra tread stiffness turn all KMAX and KMAX GEN-2 tyres into a reliable partner for your fleet.

## ENHANCED CARCASS CONSTRUCTION

### STRONG BELT STRUCTURE

to **absorb impact** and provide **comfort and durability**

### ROBUST BEAD AREA

to cope with a **high variety of loads**



### THE RIGHT TYRE WHEN YOUR FLEET NEEDS:



HIGH MILEAGE



RELIABLE  
PERFORMANCE



COMPATIBILITY  
WITH A WIDE RANGE  
OF ROUTES



ALL-WEATHER  
CAPABILITIES



# BRING ON TOMORROW WITH THE KMAX GEN-2



Want to prepare your fleet for the future? With the KMAX GEN-2 you're ready for where the road takes you. Rely on the robustness of the KMAX range, and enjoy the innovative features of this new generation.

## THE NEXT GENERATION WITH

### Improved fuel efficiency

Lower rolling resistance reduces fuel costs and improves range for EV

### Electric Drive Ready tyres

Enable your fleet to handle increased weight and torque of electric vehicles

### Integrated RFID

Efficiently monitor and manage your tyres



STEER

# KMAX S KMAX S GEN 2

**ROBUSTNESS COMBINED  
WITH HIGH LATERAL  
STABILITY AND  
GREAT MILEAGE**

The KMAX S tyre strengthens your fleet with robustness, versatility, handling stability and all-weather capability, keeping your vehicle stable on all types of roads.



5-RIB DESIGN

4-RIB DESIGN



## SOLID SHOULDER RIBS

Limited rib movement ensures even **shoulder wear**.



## HIGH NET-TO-GROSS RATIO

High wearable tread volume means **high mileage**.



## MULTI-RADIUS SAW TOOTH SHOULDER GROOVES

Additional edges provide **extra grip** on wet and slippery roads.



## INTELLIMAX RIB TECHNOLOGY

Bridges in the center grooves create a stiffer design, **reducing wear** and providing **lateral stability**.

## KMAX S GEN-2 ADDITIONAL FEATURES



**Optimized tread design**  
Providing **higher fuel efficiency** and **Electric Drive Readiness**.



**RFID technology**  
For accurate **tyre tracking**.



# KMAX D KMAX D GEN 2

**HIGH TRACTION COMBINED  
WITH GREAT MILEAGE  
AND ROBUSTNESS**

The KMAX D tyre combines high mileage, traction and robustness with all-weather capability and versatility. Keep traction on various surfaces, and effortlessly handle high torque. A tyre designed for modern fleets, prepared for a wide range of applications.



**DRIVE**



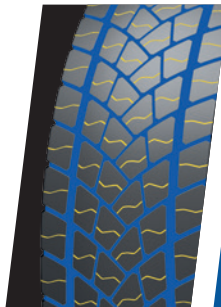
## **DIRECTIONAL TREAD PATTERN**

To evacuate water, mud and snow resulting in high traction.



## **OPEN GROOVES AND IN DEPTH SIPES**

Creating additional biting edges to provide more traction through the entire life of the tyre.



## **PROGRESSIVE CENTRELINE HUMPS**

Limit block movements and wear for excellent mileage and traction.



## **SHOULDER TIE BARS**

Reinforced shoulder areas to ensure even wear.



## **KMAX D GEN-2 ADDITIONAL FEATURES**



**Optimized tread design**  
Providing higher fuel efficiency and Electric Drive Readiness.



**RFID technology**  
For accurate tyre tracking.

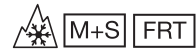
# KMAX T

## RELIABILITY AND HIGH MILEAGE FOR LOW PLATFORM TRAILERS

The KMAX T tyre provides an excellent solution for low platform trailers. Experience all-year-long mobility, and comply with M+S and 3PMSF regulation. Improve your mileage with this robust tyre, even in very challenging conditions.



**LOW PLATFORM TRAILER**



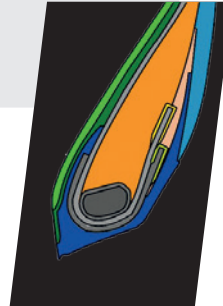
### 4-RIB TREAD DESIGN

Optimized pressure distribution in the footprint for even wear and high mileage.



### LONGITUDINAL AND RADIAL SIPES

Multiple biting edges to provide more grip on wet roads and snow.



### IMPROVED BEAD CONSTRUCTION

For demanding applications of low-platform trailers.

### ABRASION-RESISTANT TREAD COMPOUND

To withstand the high contact stresses typical of low-platform trailers.



### GROOVE EDGES

Zig-zag design provides additional gripping edges for improved all-weather mobility.



# KMAX AND KMAX GEN-2 TECHNICAL DATA

## REGROOVING RECOMMENDATIONS

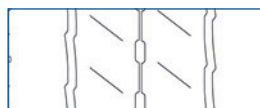
Goodyear KMAX and KMAX GEN-2 tyres are both retreadable and regroovable and have been developed for optimised sustainability, allowing fleets to make the best use of their tyre assets and substantially reduce their cost per mile and environmental footprint.

### KMAX S AND KMAX S GEN-2 17.5"-19.5"

#### 4-RIB DESIGN



New tyre tread



80% worn



Regrooved tyre

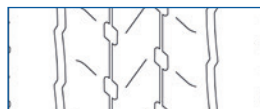


Max. regrooving depth 3mm, regrooving width 6-8mm.

#### 5-RIB DESIGN



New tyre tread



80% worn



Regrooved tyre



Max. regrooving depth 3mm, regrooving width 6-8mm.

### KMAX D AND KMAX D GEN-2 17.5"-19.5"



New tyre tread



80% worn



Regrooved tyre



Max. regrooving depth 3mm, regrooving width 6-8mm.

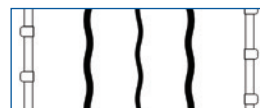
### KMAX T 17.5"-19.5"



New tyre tread



80% worn



Regrooved tyre



Max. regrooving depth 3mm, regrooving width 6-8mm.



## SIZES AND SPECIFICATIONS

TYRE DESIGN NAME	SIZE	LOAD / SPEED INDEX 1	LOAD / SPEED INDEX 2	FUEL EFFICIENCY	WET GRIP	NOISE EMISSIONS (CLASS / dB)	SNOW GRIP 3PMSF	M+S
<b>KMAX S</b>	205/75 R 17.5	124/122 M		D	B	A 69	✓	✓
	225/75 R 17.5	129/127 M		D	B	A 69	✓	✓
	235/75 R 17.5	132/130 M		D	B	A 69	✓	✓
	265/70 R 17.5	139/136 M		C	B	A 69	✓	✓
	245/70 R 19.5	136/134 M		D	C	A 71	✓	✓
	305/70 R 19.5	148/145 M		C	C	A 71	✓	✓
<b>KMAX S GEN 2</b>	215/75R 17.5	128/126M		C	C	A 71	✓	✓
	245/70R 17.5	136/134M		C	C	A 71	✓	✓
	265/70R 19.5	140/138M		UNDER DEVELOPMENT			✓	✓
	285/70R 19.5	146/144L	144/142M	UNDER DEVELOPMENT			✓	✓
<b>KMAX D</b>	205/75 R 17.5	124/122 M	126/124G	D	C	B 74	✓	✓
	225/75 R 17.5	129/127 M		D	C	A 73	✓	✓
	235/75 R 17.5	132/130 M		D	B	A 71	✓	✓
	265/70 R 17.5	139/136 M		D	B	A 71	✓	✓
	245/70 R 19.5	136/134 M		D	B	A 72	✓	✓
	305/70 R 19.5	148/145 M		C	C	A 72	✓	✓
<b>KMAX D GEN 2</b>	215/75R 17.5	128/126M		C	C	A 71	✓	✓
	245/70R 17.5	136/134M		C	C	A 72	✓	
	265/70R 19.5	140/138M		UNDER DEVELOPMENT			✓	✓
	285/70R 19.5	146/144L	144/142M	UNDER DEVELOPMENT			✓	✓
<b>KMAX T</b>	215/75 R 17.5	136/134 J		C	B	A 67	✓	✓
	235/75 R 17.5	143/141 J	144/144 F	C	B	A 69	✓	✓
	245/70 R 17.5	143/141 J	146/146 F	B	B	A 70	✓	✓
	205/65 R 17.5	129/127 K	132/132 J	C	B	A 70	✓	✓
	245/70 R 19.5	141/140 J		C	B	A 69	✓	✓
	285/70 R 19.5	150/148 J		B	B	A 70	✓	✓
	265/55 R 19.5	141/140 J	142/142 G	C	B	A 71	✓	✓









**GET MORE MILES  
FOR YOUR MONEY.  
WHATEVER THE ROAD,  
WHATEVER THE WEATHER.**



Goodyear Operations S.A.  
Avenue Gordon Smith  
L-7750 Colmar-Berg  
Luxembourg

**[www.goodyear.eu/truck](http://www.goodyear.eu/truck)**

Subject to modifications and errors. Products  
and data are shown for illustrative purposes only  
Graphic accuracy and logo placement may differ  
from the genuine product.



(1123/ENG)

**GOODYEAR**